



# Smith System®

Specification Sheet  
WWW.SMITHSYSTEM.COM

## Flowform® Learn Lounge Flowform Learn Lounge Ottoman + 36" Surface

MODEL#: 56021



### OVERVIEW

Ottoman + Surface adds a new level of comfort and flexibility to spaces. Easily rearrange into limitless configurations for collaboration. Pairs well with the other pieces in the Flowform Learn Lounge suite.

### MATERIALS

The structure is constructed of plywood frame which is made from Sustainable Forestry Initiative (SFI) certified responsible wood sources. Comes with reversible nylon & felt glides. The surface is 3/4" thick 45 lb density particle board core with a .030" high pressure laminated surface and a .020" melamine backer sheet.

The fabric is Designtex Alphabet 100% vinyl, with a 1,000,000 D.R. Durability rating. The backing of the fabric is polyester. The fabric is highly durable and is easily cleanable with a 10:1 Water: Bleach mixture.

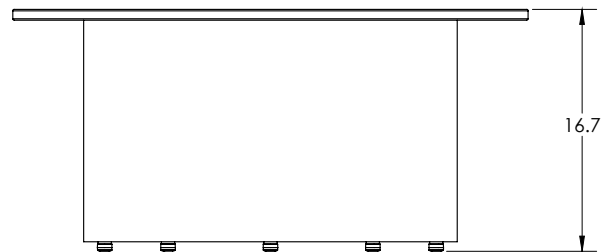
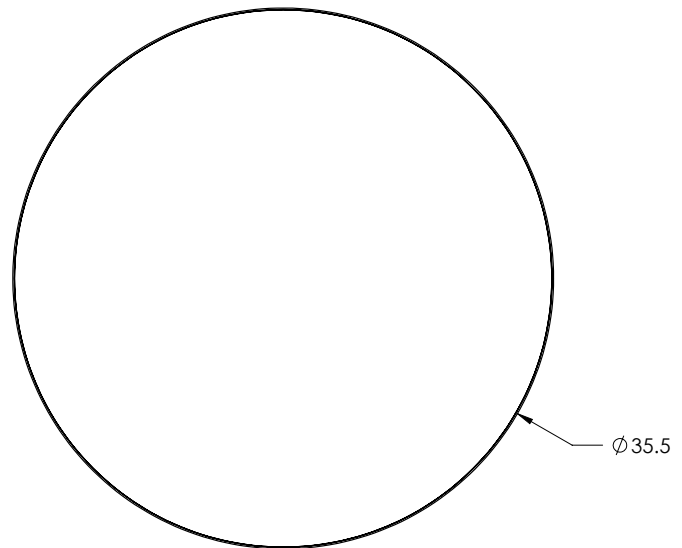
**WEIGHT CAPACITY: 200 lbs**

### DESIGNTEX

PATTERN	Alphabet
CONTENT	100% Vinyl
BACKING	Polyester, Knit
FLAME RESISTANCE	CA Bulletin 117-2013
DURABILITY	1,000,000 D. R.
MAINTENANCE	W: Bleach Cleanable (10:1)
FINISH	Advanced Protective Topcoat

### DIMENSIONS

Model	Description	D"	H"	WT
56021	Ottoman + 36" Surface	35.5 dia.	16.7	38



## STANDARD LAMINATE OPTIONS

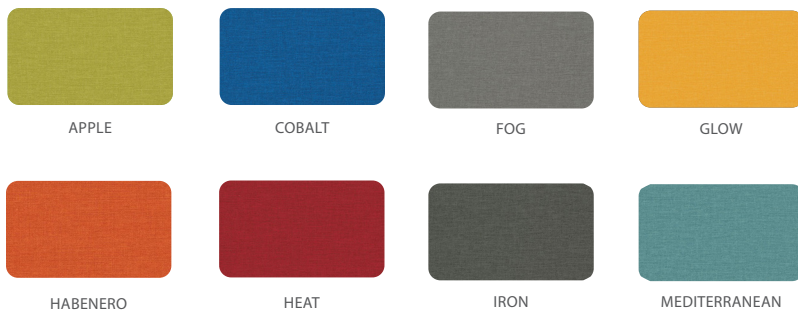
Want to specify a different laminate?

No problem. If you have 20 or more tops of the same color -60 or -38 there is no upcharge. Have 20 or less? We can quote for you with the Wilsonart code and - finish style. We can specify other laminates - call to inquire and get a quote.

## LAMINATE AND MATCHING 3MM EDGE OPTIONS



## VINYL COLOR OPTIONS



## VINYL COLOR OPTIONS WITH LEAD TIME

